



**SCIENCE &**

**SCRIPTURE**

# CREATION VS. EVOLUTION



# Support for Creation

## I. Introduction



CREATION science

**“For in six days the Lord made the heavens and the earth, the sea and all that is in them, and rested on the seventh day; therefore, the Lord blessed the sabbath day and made it holy.”**

**Exodus 20:11**

**MOSES, who saw the  
glory of the Lord**

# THE MYTH OF EVOLUTION

“Ultimately the Darwinian theory of evolution is no more nor less than the great cosmogenic **myth** of the 20th century.”

**Michael Denton**




# Support for Creation

**I. Introduction**

**II. Destroying Evidence**

**CREATION** science

➤ Paleontology  
➤ Geology

ERA	PERIOD	MILLIONS OF YEARS		TYPICAL PLANTS AND ANIMALS
		START	DURATION	
CENOZOIC	PLEISTOCENE	1	1	
	PLIOCENE	11	10	
	MIOCENE	25	14	
	OLIGOCENE	40	15	
	EOCENE	60	20	
	PALEOCENE	70	10	
MESOZOIC	CRETACEOUS	135	65	
	JURASSIC	180	45	
	TRIASSIC	225	45	
PALEOZOIC	PERMIAN	270	55	
	PENNSYLVANIAN	310	40	
	MISSISSIPPIAN	350	40	
	DEVONIAN	400	50	
	SILURIAN	440	40	
	ORDOVICIAN	500	60	
	CAMBRIAN	600	100	
	PRECAMBRIAN	LATE	1700	
EARLY		3440	1700	








# Cutting-Edge Science

## 1. Flood Geology

- Paleontology
- Geology
- Mathematics

ERA	PERIOD	MILLIONS OF YEARS		TYPICAL PLANTS AND ANIMALS
		START	DURATION	
CENOZOIC	PLEISTOCENE	1	1	 <p>CORYPHODON      PROCERHINCOS      MAMMOTH</p>
	PLIOCENE	11	10	
	MIOCENE	25	14	
	OLIGOCENE	40	15	
	EOCENE	60	20	
	PALEOCENE	70	10	
MESOZOIC	CRETACEOUS	135	65	 <p>PLESIOSAUR      CYCADOIDEA      PTERANODON          ICHTHYOSAUR      ANURODON</p>
	JURASSIC	180	45	
	TRIASSIC	225	45	
PALEOZOIC	PERMIAN	270	55	 <p>WILLIAMSONIA      MEDULLOSA      COCKROACH      PELYCOSAUR          SPHENOPHYTES      CALAMITES      CORDAITES      BLASTOID      OSTRACODERM          ANTHRACOS</p>
	PENNSYLVANIAN	310	40	
	MISSISSIPPIAN	350	40	
	DEVONIAN	400	50	
	SILURIAN	440	40	
	ORDOVICIAN	500	60	
	CAMBRIAN	600	100	
	PRECAMBRIAN	LATE	1700	
EARLY		3440	1700	

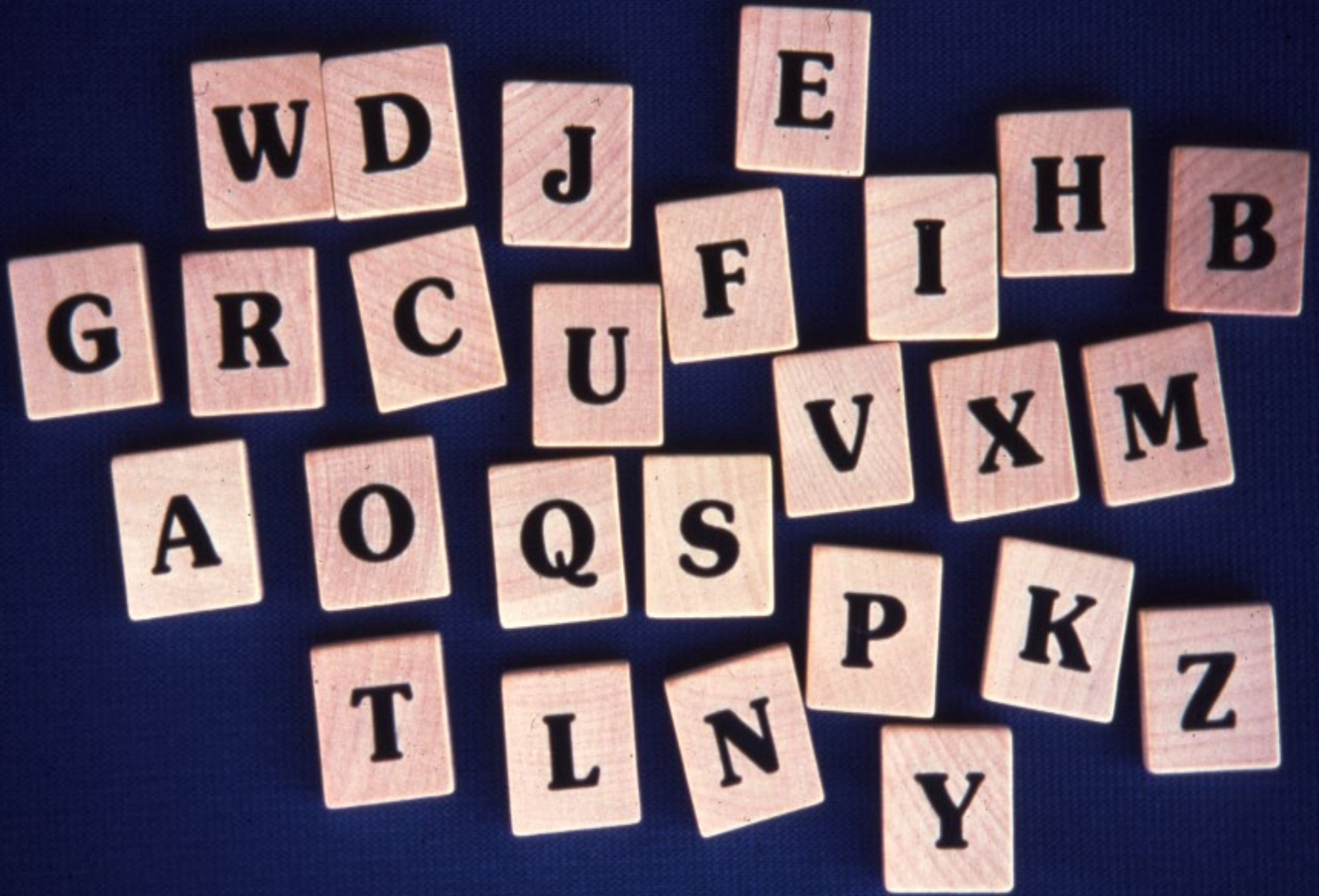
# MATHEMATICS

$$E = mc^2 \quad A = \pi r^2$$

$$x = \frac{-b \pm \sqrt{b^2 - 4ac}}{2a}$$



$$\sum_{k=0}^n \binom{n}{k} x^k a^{n-k}$$



**Probability**



$$(1/26)^3 =$$

**1 in 17,576**

# EVOLUTION

$$(1/26)^9 =$$

**1 in 5.4 Trillion**

# THE THEORY OF EVOLUTION

$$(1/27)^{23} =$$

1 in  $8.3^{32}$

# 1 Protein Molecule

1 in  $10^{520}$

Atoms -  $10^{80}$





# **Mycoplasma Hominis H39**

**600 Different Proteins**

**Each with 400 Amino Acids**

**For all 600 =**

**1 in  $10^{520 \times 600}$**

# Support for Creation

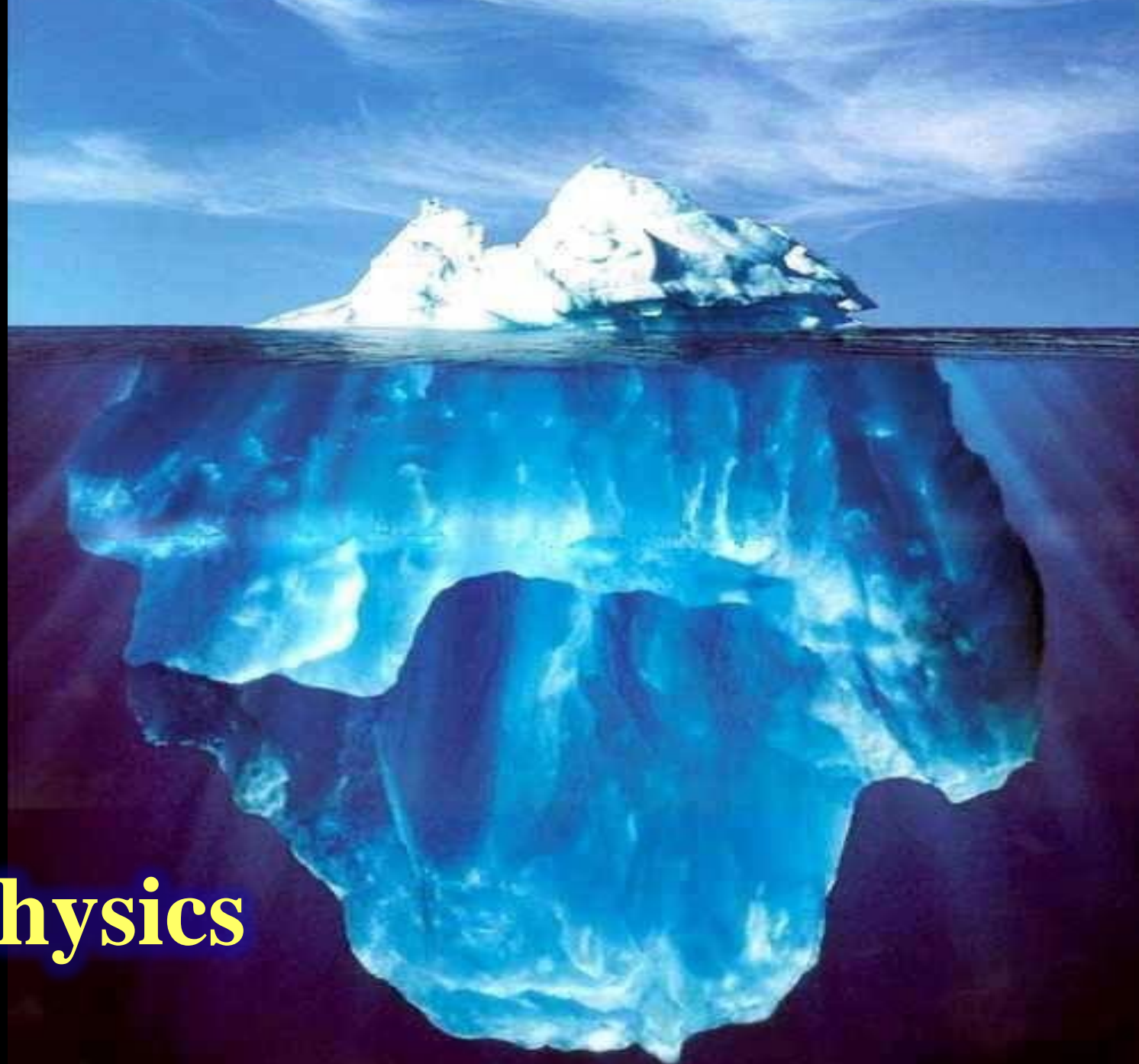
**I. Introduction**

**II. Destroying Evidence**

**III. Scientific Evidence**

**A. Physics**

**CREATION** science



**Physics**

# **THERMODYNAMICS**

## **➤ Evolution -**

**Principle of Innovation**

**Higher & Higher Complexity**

## **➤ Thermodynamics -**

**Universally Accepted**

**No Exceptions Observed**

**Except True Miracles**

**“Thus, heat always flows spontaneously from a hotter to a colder body; gases always seep thru an opening spontaneously from a region of high pressure to a region of low pressure; gases & liquids left by themselves always tend to mix, not unmix. ... Rocks weather & crumble; iron rusts; people grow old. These are all examples of **irreversible** processes that take place naturally in only one direction &, by their one-sidedness, express the 2nd law of thermodynamics.”**

**Sears & Zemansky**

# 2<sup>nd</sup> LAW of Thermodynamics

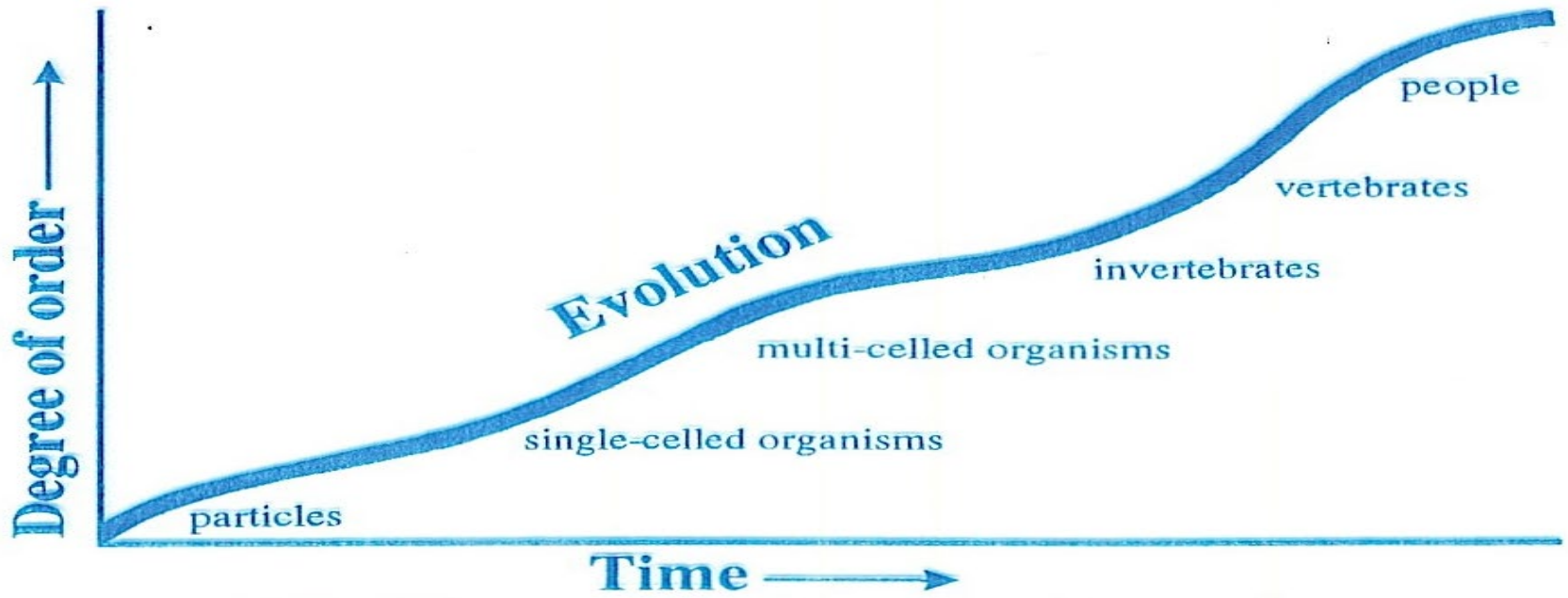
- Irreversible tendency to unwind
- Movement from organization to disorganization
- Law of decay
- Isa 51:6, Rom 8:20-22

# JUST OUTSIDE THE BOX



Mum, you can't fight the 2nd law of thermodynamics  
All things, which includes bedrooms, move from a state of order  
to disorder



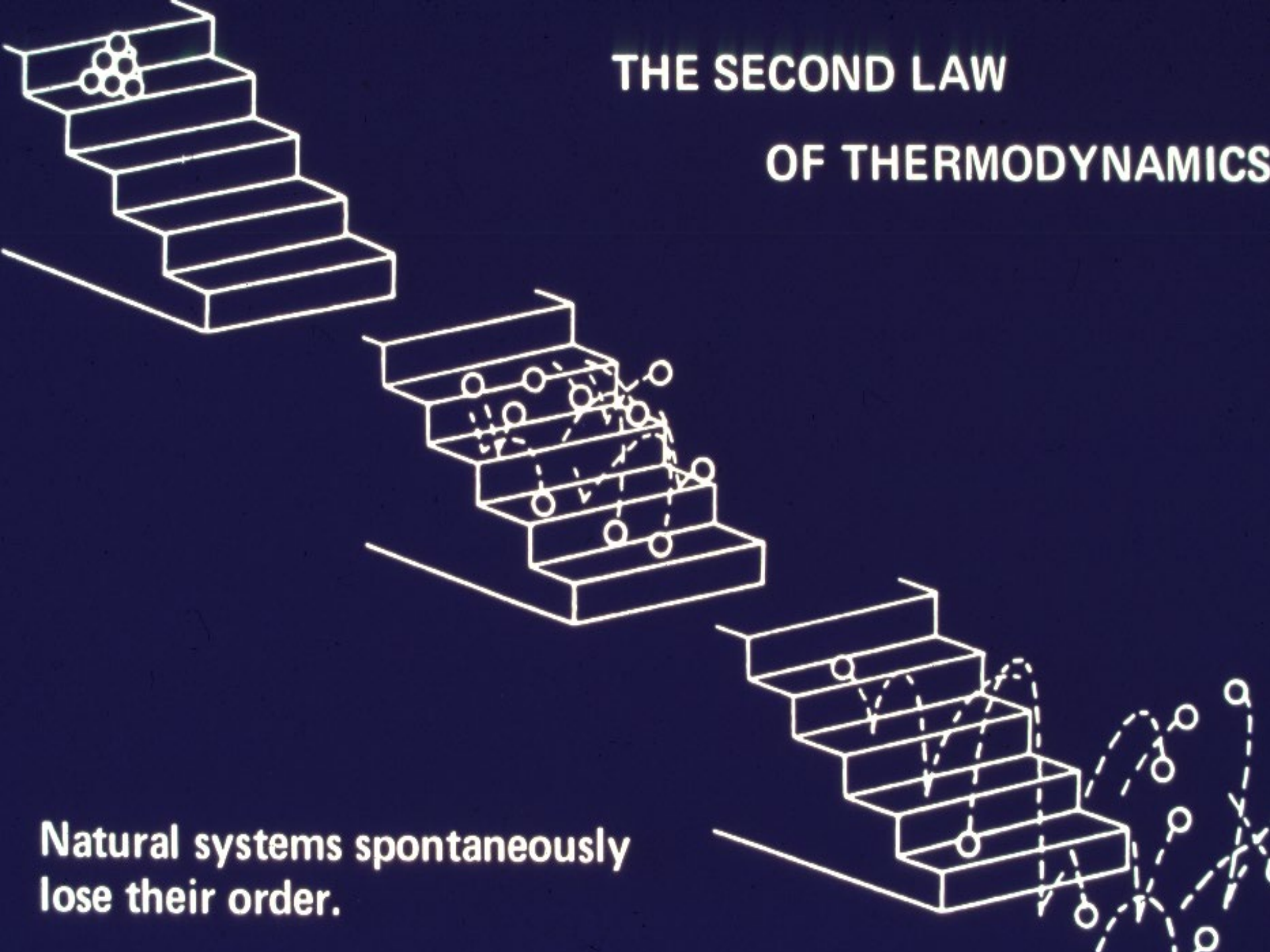


(a) Evolution proposes an increase in order over time.



# THE SECOND LAW

## OF THERMODYNAMICS



**Natural systems spontaneously lose their order.**





**After a  
Million Years?**

# After 10 Million Years?



**Ps 102:25-26** “Of old You founded the earth, And the heavens are the work of Your hands.

**26** “Even they will perish, but You endure; And all of them will wear out like a garment; Like clothing You will change them and they will be changed.

**Rom 8:20-22** For the creation was subjected to futility, not willingly, but because of Him who subjected it, in hope 21 that the creation itself also will be set free from its slavery to corruption into the freedom of the glory of the children of God. 22 For we know that the whole creation groans and suffers the pains of childbirth together until now.

# Support for Creation

**I. Introduction**

**II. Destroying Evidence**

**III. Scientific Evidence**

**A. Physics**

**B. Biology**

**CREATION science**





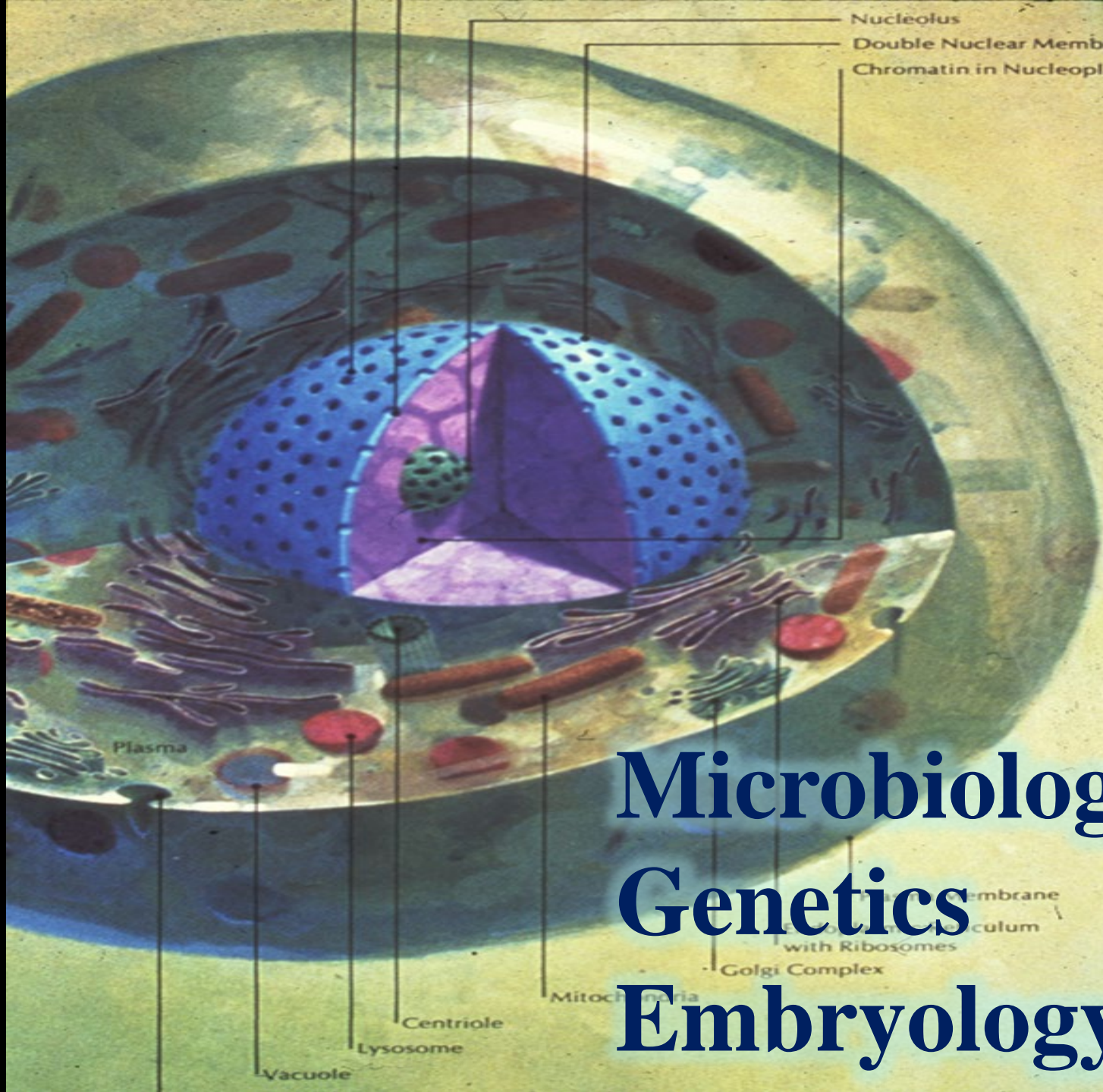
# Evidence of Design



**Genetics**

**Evolution - Life began in Simple Form**





Nucleolus  
Double Nuclear Membrane  
Chromatin in Nucleoplasm

Plasma

# Microbiology

# Genetics

# Embryology

Cell Membrane  
Endoplasmic Reticulum  
with Ribosomes  
Golgi Complex

Mitochondria  
Centriole  
Lysosome  
Vacuole

# **1 CELL**

✓ **DNA**

✓ **RNA**

✓ **Mitochondrion**

✓ **ATP**

✓ **Polysaccharides**

✓ **Cyclic AMP**

✓ **Ribosomes**

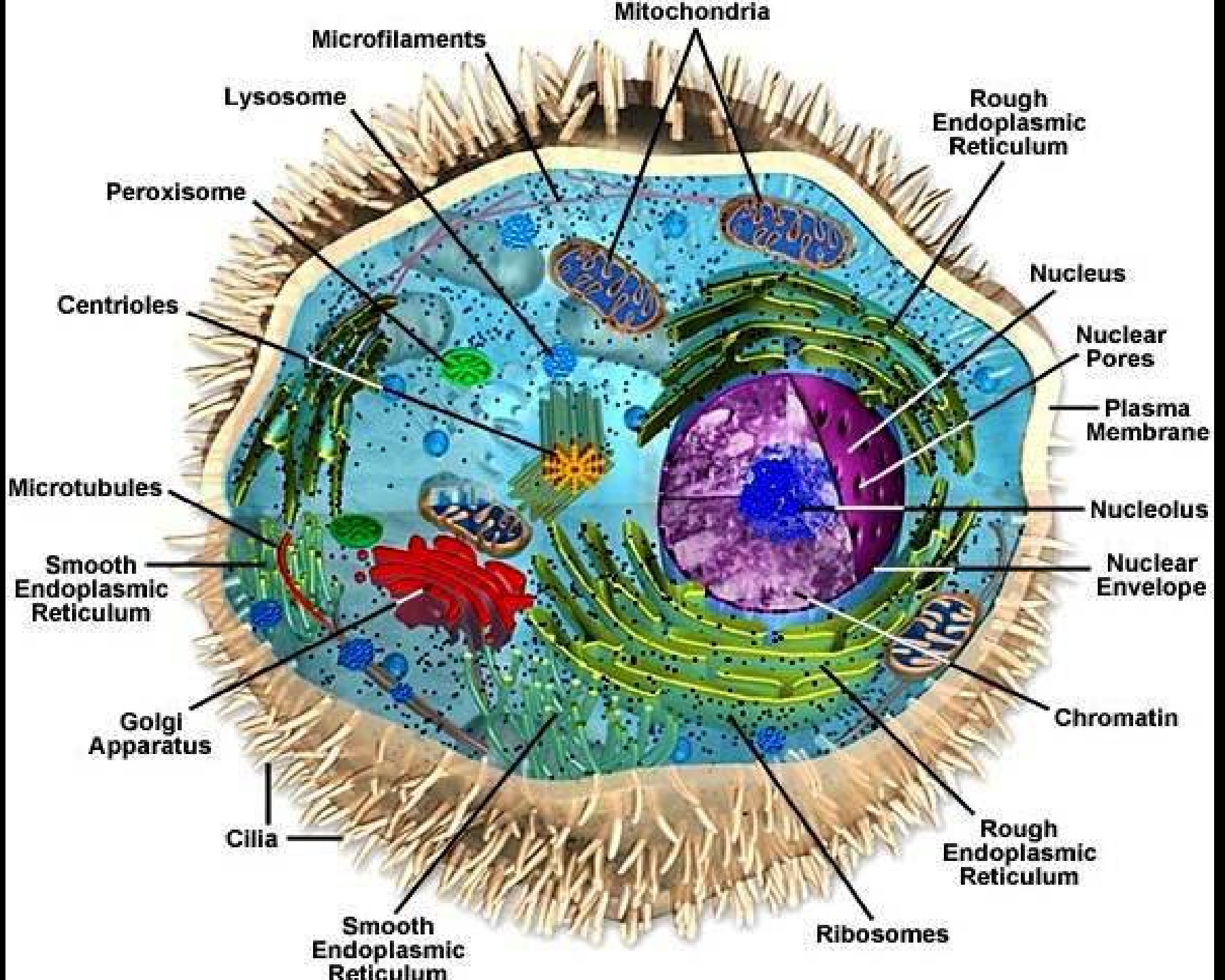
✓ **Lysosomes**

✓ **Lipids**

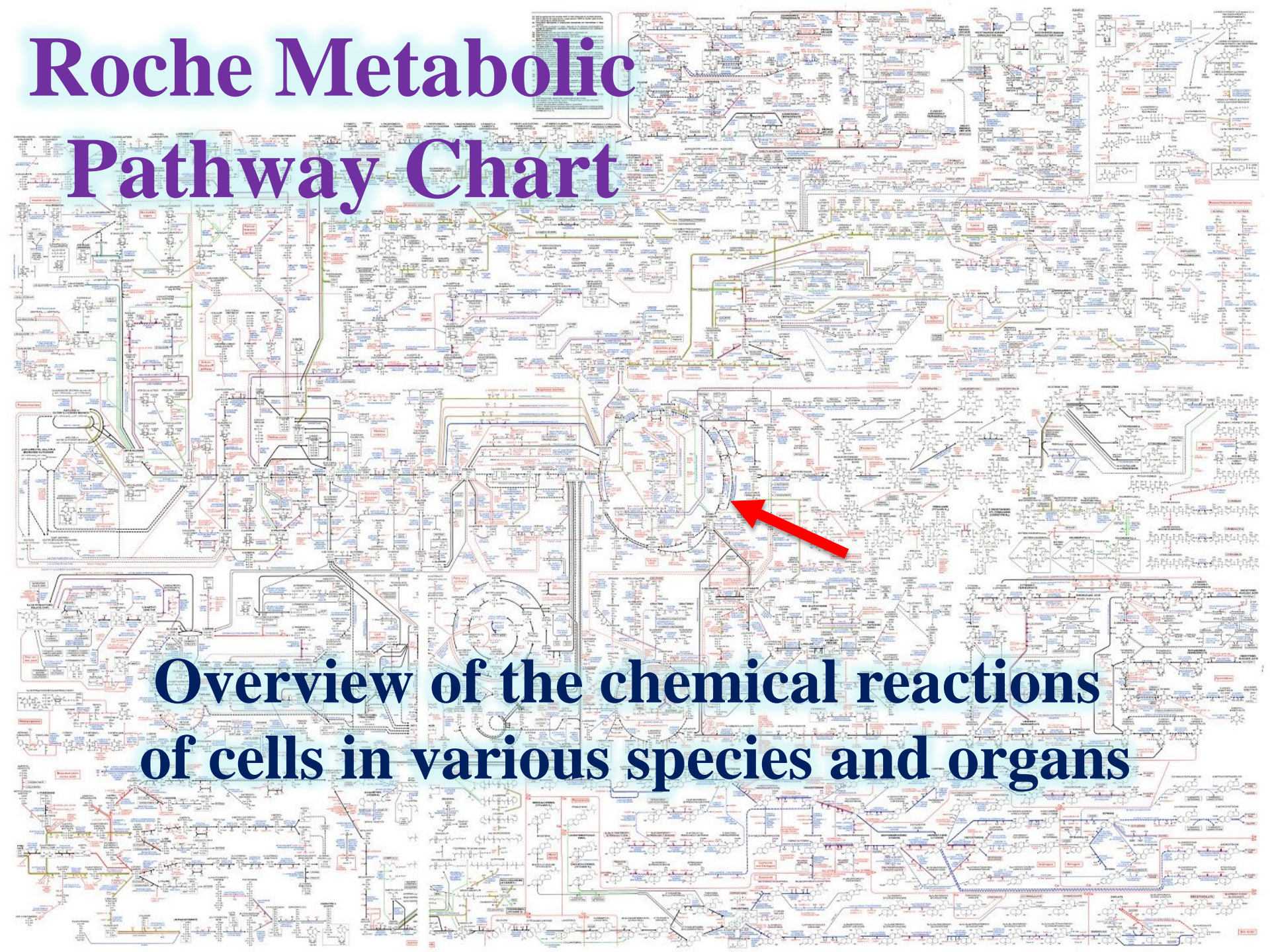
✓ **Porphyrins**

✓ **Proteins**

✓ **Amino Acids**



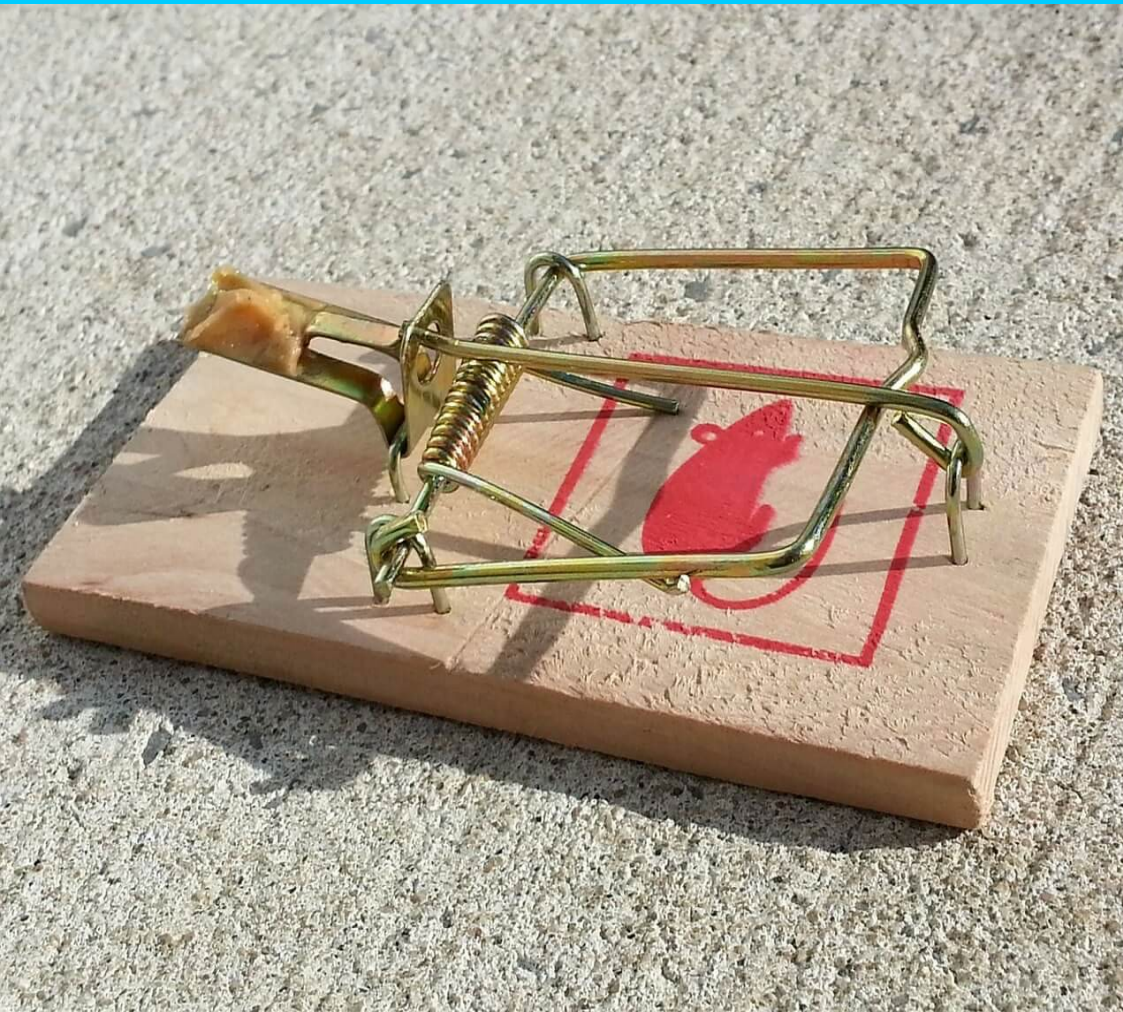
# Roche Metabolic Pathway Chart



**Overview of the chemical reactions  
of cells in various species and organs**



# IRREDUCIBLE COMPLEXITY



- ✓ Base
- ✓ Holding Bar
- ✓ Spring
- ✓ Hammer
- ✓ Catch

**Michael Behe**



“The cumulative result shows with piercing clarity that life is based on *machines*—machines made of molecules!”

Michael Behe

**“Molecular biology has shown that even the simplest of all living systems on earth today, bacterial cells, are exceedingly **complex** objects. ... far **more complicated** than anything built by man ...”**

**Michael Denton**

# **CONCLUSION**

## ➤ **Evolution -**

**Positive Evidence is Superficial**

**Real Science Destroys Theory**

## ➤ **Creation -**

**Science Supports Intelligent Design**

**Science Supports Biblical Worldview**

# DEOXYRIBO NUCLEIC ACID

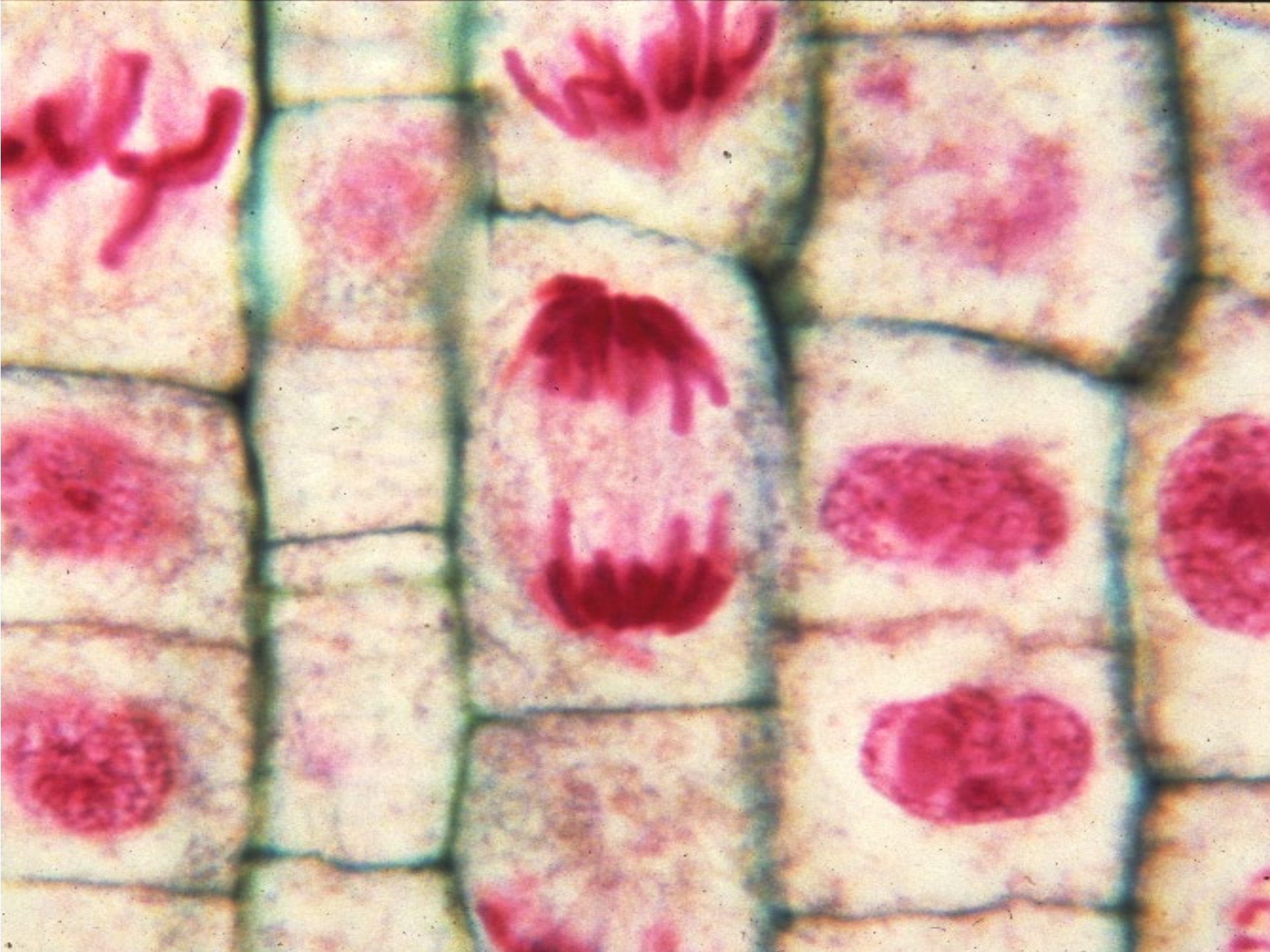


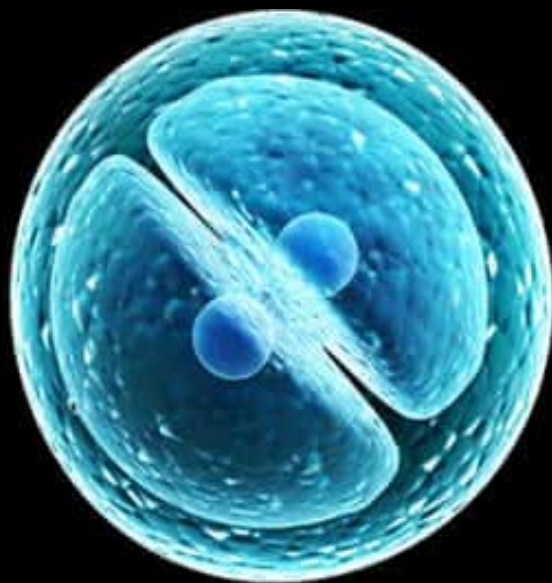
# DNA

A glowing blue DNA double helix structure is the central focus, set against a dark blue background filled with light particles and faint binary code. The helix is rendered with a textured, wireframe-like appearance, giving it a futuristic and digital feel.

➤ More Info Stored than any Other Known System

- Double Helix Chains
- Library in Molecule
- All Characteristics



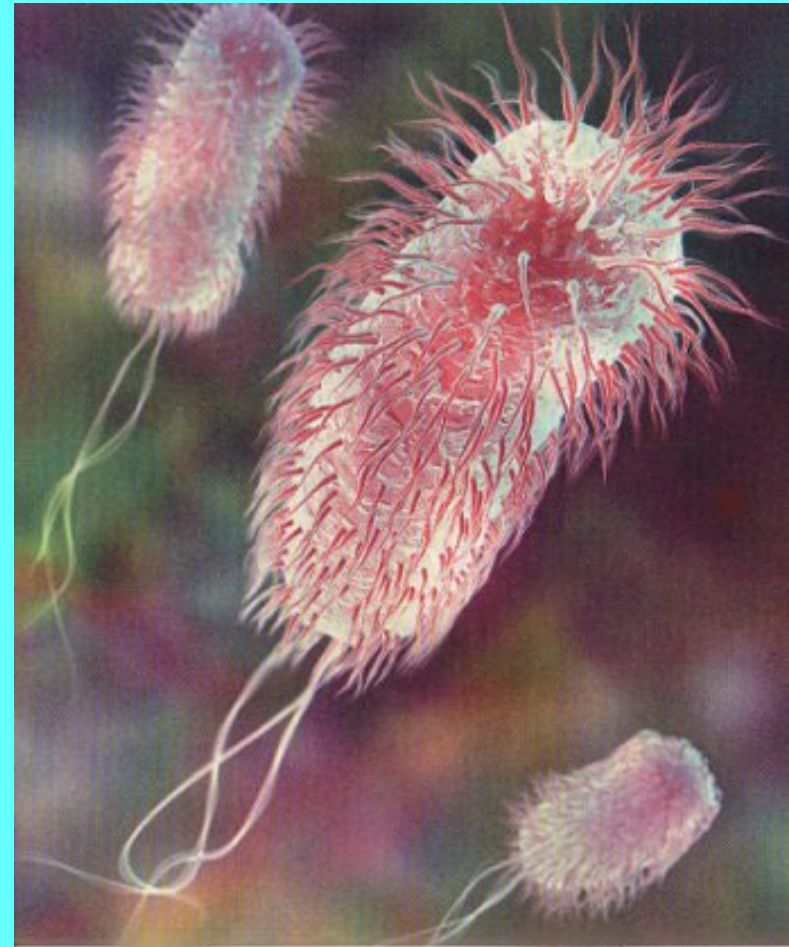


# DNA LIBRARY

**Escherichia coli - ~ 3 million**

**3-letter codons**

**= 3 volumes of  
1,000 pages at  
1,000 words/page**





# DNA LIBRARY

Human - ~ 2 billion  
3-letter codons

= 2,000 volumes of  
1,000 pages at  
1,000 words/page



# Cutting-Edge Science

**1. Flood Geology**

**2. Mitochondrial (DNA) Eve**

**200,000-300,000**

**3. Y-chromosomal Adam**

**180,000-250,000**

# Complexity Everywhere



**2-3,000  
Eggs/Day**



**Colony = 1 Queen &  
60,000 Workers**

# WORKERS

1. Sanitation

2. Dietician



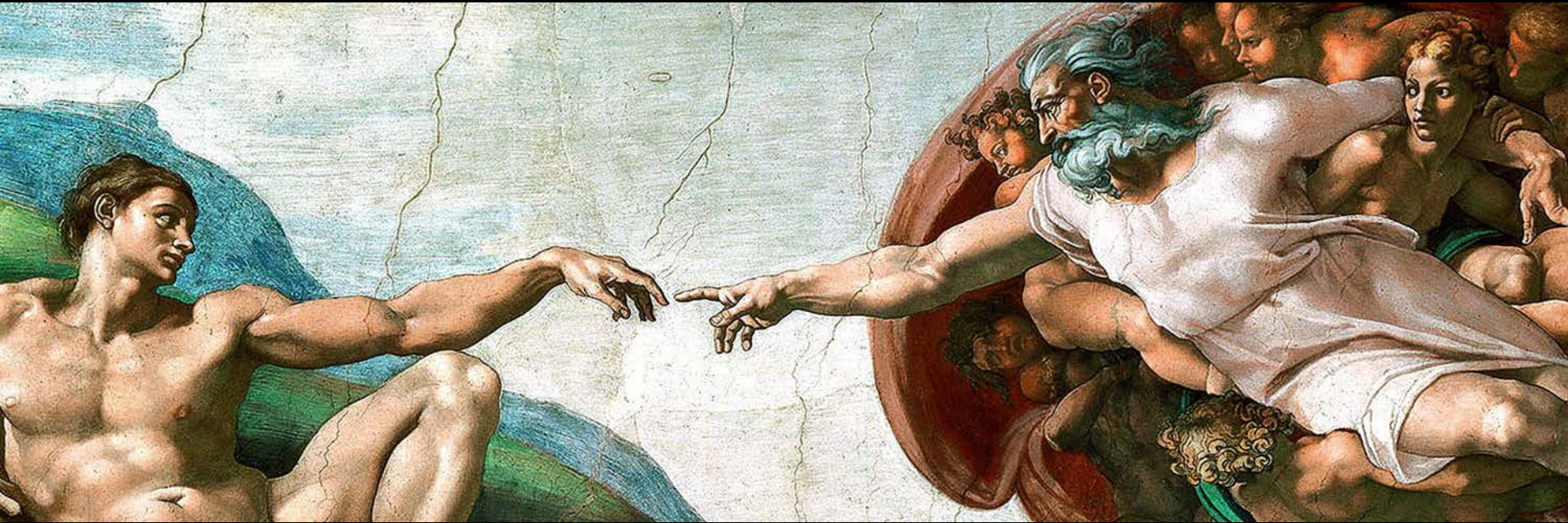
3. Manufacturing

4. Construction

5. Security

6. R & D

# INTELLIGENT DESIGN



At All Levels  
Everywhere



# **MORE EXAMPLES**

- 1. Ants that Eat Junk Food**
- 2. Molds that Eat Animals**
- 3. Beetles with Big Guns**
- 4. Moths with Ear Problems**
- 5. Carnivorous Plants**

# Cutting-Edge Science

**1. Flood Geology**

**2. Mitochondrial (DNA) Eve**

**200,00-300,000**

**3. Y-chromosomal Adam**

**180,00-250,000**

**4. Baraminology**



# HUMAN BODY

➤ **12 Billion  
Brain Cells**



➤ **10 Trillion  
Body Cells**

# **HUMAN EYE**



**Sensitive to 6  
Quanta of Light**

# Support for Creation

**I. Introduction**

**II. Destroying Evidence**

**III. Scientific Evidence**

**A. Physics**

**B. Biology**

**C. Anthropocentric Principle**

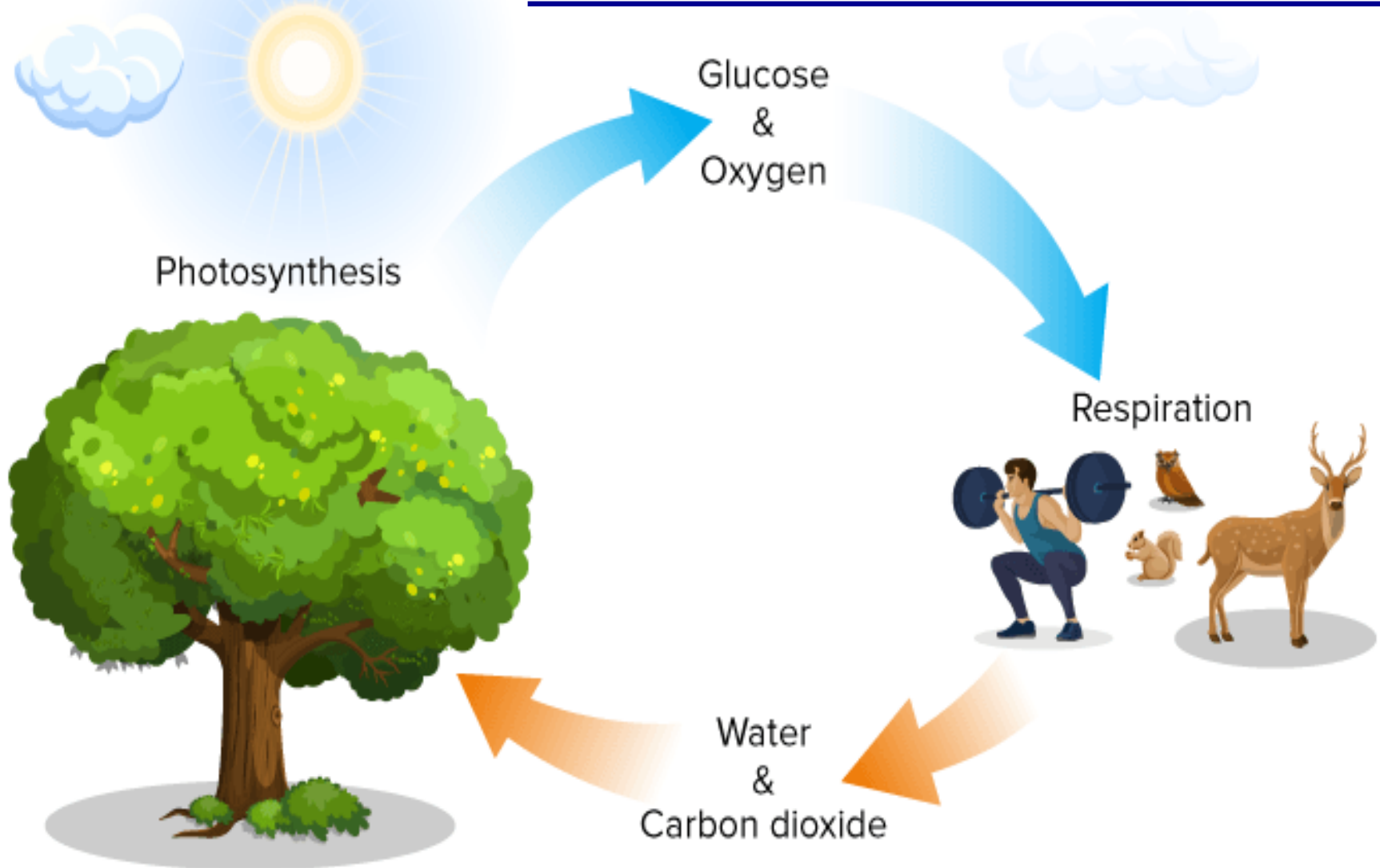
**CREATION science**

# ANTHROPOCENTRIC PRINCIPLE

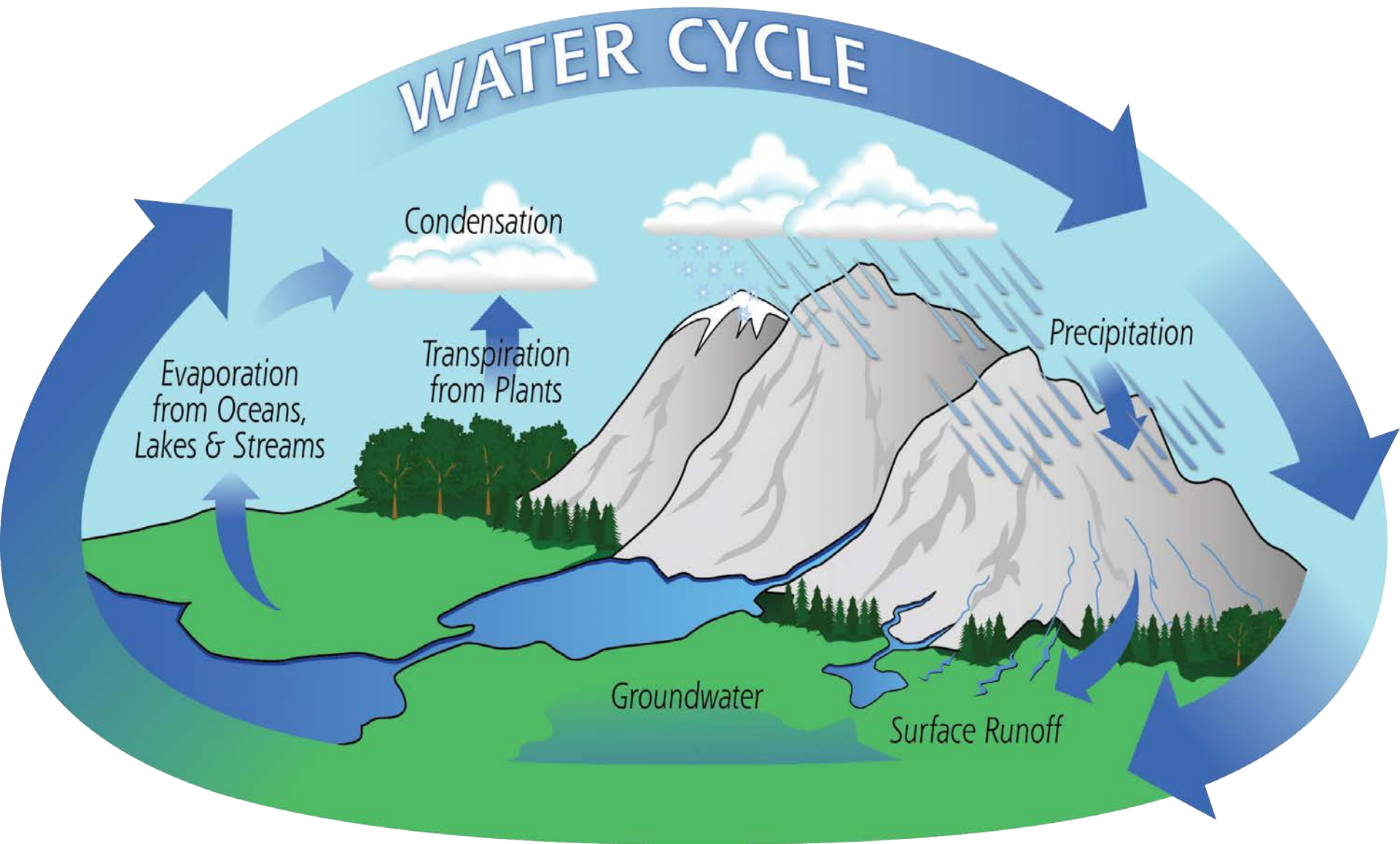
**“... everything about  
the universe tends toward  
man, toward making life  
possible and sustaining it.”**

**H. Ross**

# ECOLOGICAL INTERDEPENDENCE



# HYDROLOGIC BALANCE



# Support for Creation

**II. Destroying Evidence**

**III. Scientific Evidence**

**A. Physics**

**B. Biology**

**C. Anthropocentric Principle**

**D. Evidence from Cause & Effect**

**CREATION science**

# CAUSE & EFFECT

- **Fundamental Premise**
- **Relates All to Phenomenon**
- **No Effect Greater than Cause**
- **Implies a Primary Cause**



# 1<sup>st</sup> CAUSE

✓ Limitless Space

✓ Endless Time

✓ Boundless Energy

✓ Interrelationships

✓ Incredible Complexity

✓ Spiritual Values

✓ Human Responsibility

✓ Human Life

✓ Infinite

✓ Eternal

✓ Omnipotent

✓ Omnipresent

✓ Omniscient

✓ Spiritual

✓ Volitional

✓ Living

# **CONCLUSION**

## **➤ Evolution -**

**Positive Evidence is Superficial**

**Real Science Destroys Theory**

## **➤ Creation -**

**Science Supports Intelligent Design**

**Science Supports Biblical Worldview**

# Support for Creation

**I. Introduction**

**II. Destroying Evidence**

**III. Scientific Evidence**

**IV. Evidence from Scripture**

**CREATION science**

**“Before the mountains were born Or  
You gave birth to the earth and the world,  
Even from everlasting to everlasting, You  
are God.”**

**Psalm 90:2**

**MOSES, who saw the  
glory of the Lord**

